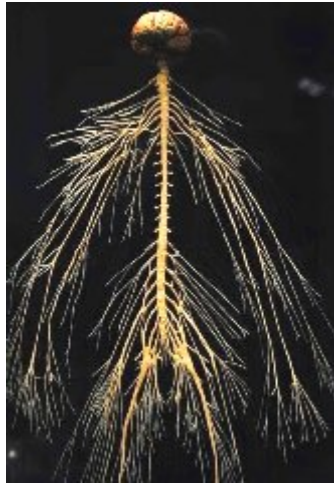


## 'I see men as trees, walking'

by zed Thursday, Jan 16 2014, 12:45pm

international / prose / post

I hope you haven't missed the 'symbols for the trees' in various religious texts. Tree symbolism is common to all cultures and religions but why and what does tree symbolism hide from the profane?



***Human nervous system - 'tree walking'***

I first became intrigued by a description in the NT, which appeared to be just another healing by the Christian saviour; however, this one was different in that a minor ritual was performed by Jesus Christ to restore 'sight' to a 'blind' man -- I would add that none of Jesus' healings should be taken literally, especially raising the 'dead' -- remember, let the 'dead' bury the dead! Surely we are not children or stunted in our development that we require irrational fantasy to replace rational reality (pigs do not fly and neither do men!)

I refer to a passage in Mark 8 -- "...I see men as trees, walking." A number of textual indicators are used by scribes to announce that this is no ordinary event and that the reader should pay closer attention.

Notice how the saviour engages in a minor ritual healing rather than the usual 'walk' or 'touch,' instant coffee healing; Jesus the phallic God spits (ejaculates) on this man's eyes and then asks what do you see? The very odd answer is as above! How so? We are immediately returned to the Garden of Eden and the prohibition placed on the tree of self awareness (good and evil) by order of the homophobic, homicidal, genocidal, misogynistic, psychopathic God, Jehovah (modern Israel explained!); in other words, do not endeavour to harmonise and synchronise nerve currents and flood the brain with neural 'light' and free yourself from the endless binary struggle of opposites (good-evil add infinitum) -- remain IGNORANT and SUBSERVIENT at all times and be good slaves!

Notice how the blind man's answer, indicating clairvoyant vision, does not faze Christ in the least, whereas he sweated blood at the *thought* of his crucifixion, well, no-one is perfect!

We have read in the OT that God appeared to Moses as a bush that burns without burning -- very erotic but what does all this kinetic (energetic) vegetation signify? I'll give you a hint; the Kabbalistic

tree of life requires 'climbing' to reach the supra-normal, it is a vital not a morbid object. The climbing or ascension of (kinetic) vital energy is often represented as a serpent (read the [Emerald Tablet](#), this symbolism is universal/archetypal). Is it all now beginning to make sense? If not resume watching American idol or Miley Cyrus scratching her cunt and poking her moronic tongue in your moronic faces -- sorry but I've had a hard life dealing with 'blind, violent/cowardly morons,' however, I have developed my own cure, I 'shit in their faces' by offending all their learned cultural sensibilities and bourgeois values, which are the most tenacious impediments to real knowledge, awareness and realisation -- have you fuckin' got that, morons? If you are offended by YOUR reaction to my words then fuck off into your learned cultural world of bullshit and continue in your delusions, we have important matters at hand.

Now consider all the representations in various cultures of psychic anatomy; Chinese chi currents, Hindu chakras and kundalini and Persian body currents in medical anatomy. You will note that the closest thing to 'trees' in the human body, is the central nervous system, so you shouldn't have any more trouble with tree, kundalini, chakra etc symbolism -- God is realised via a synchronised central nervous system and brain -- should I mention the endocrine 'fruit' on the trees?

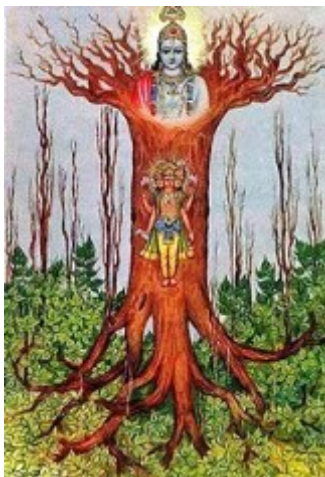
The 'tree' the jealous God of the OT does not wish you to touch, as you would then be all-knowing and equal to the creator, is the secret locked in the human central nervous system and associated nerve ganglia -- but we've got news for him! Fuck him, he's a misogynist, homicidal faggot, anyway!



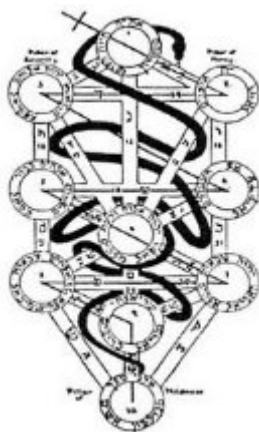
***firing neuron***



***Chi flow diagram***



***Hindu representation***



***kabbalist tree***



***Chakra and Kundalini representation***

---

Jungle Drum Prose/Poetry. <http://jungledrum.lingama.net/news/story-962.html>